

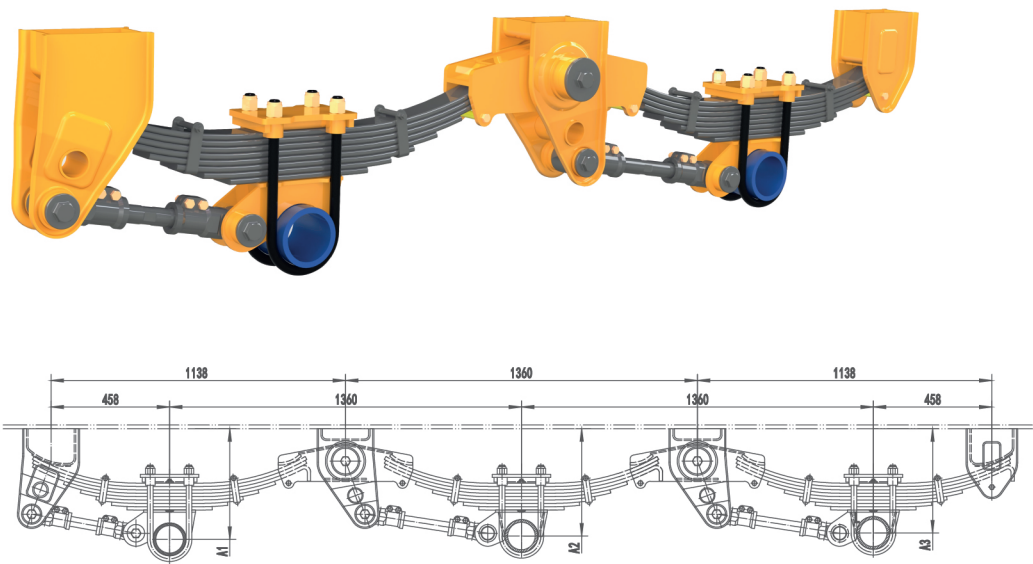


YONGLITAI AXLE

Transport your load safely
efficiently and sustainably

PRODUCT CATALOG

American Type 11t Mechanical Suspension

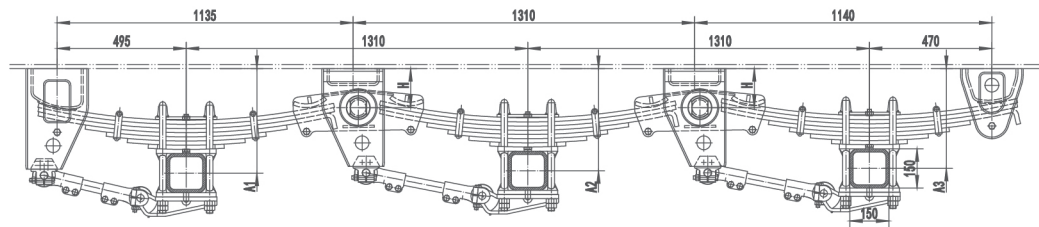
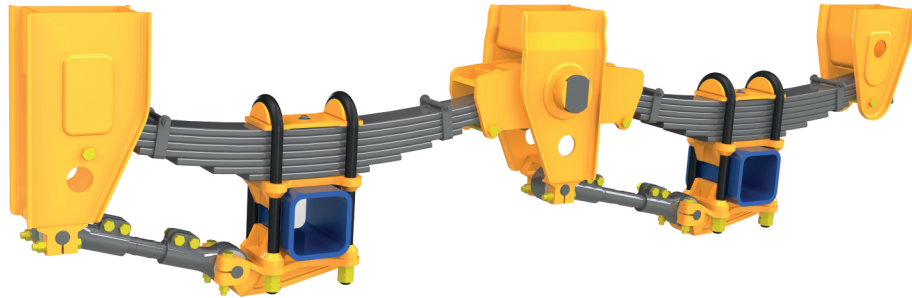


Technical parameter

| Item | Carrying capacity | Plate spring | Wheel base | Mounting height | | |
|----------|-------------------|--------------|-------------|-----------------|-------|-------|
| | | | | A1 | A2 | A3 |
| LT11.301 | 11t×3 | 8-75×13 | 1310/1360mm | 440mm | 440mm | 440mm |
| LT11.302 | 11t×3 | | 1310/1360mm | 440mm | 427mm | 415mm |
| LT11.303 | 11t×3 | | 1310/1360mm | 440mm | 415mm | 390mm |
| LT11.304 | 11t×3 | | 1310/1360mm | 427mm | 415mm | 402mm |
| LT11.305 | 11t×3 | | 1310/1360mm | 415mm | 415mm | 415mm |
| LT11.306 | 11t×3 | | 1310/1360mm | 415mm | 402mm | 390mm |
| LT11.307 | 11t×3 | | 1310/1360mm | 390mm | 390mm | 390mm |

- Note:** 1. Mounting height is optional.
2. The A value marked in the figure is the mounting height value for unloading status.
3. Rights of changing product design and specification are reserved.

American Type Mechanical Suspension



Technical parameter

| Item | Carrying capacity | Plate spring | Wheel base | Mounting height | | | |
|--|-------------------|--------------|------------------|-----------------|-------|-------|-------|
| | | | | A1 | A2 | A3 | H |
| LT13.301 | 13t ×3 | 7-90×16 | 1310/1360/1500mm | 388mm | 379mm | 370mm | 150mm |
| LT13.302 | 13t ×3 | | 1310/1360/1500mm | 418mm | 409mm | 400mm | 180mm |
| LT13.303 | 13t ×3 | | 1310/1360/1500mm | 438mm | 429mm | 420mm | 200mm |
| LT13.304 | 13t ×3 | | 1310/1360/1500mm | 468mm | 459mm | 450mm | 230mm |
| LT13.305 | 13t ×3 | | 1310/1360/1500mm | 488mm | 479mm | 470mm | 250mm |
| Notes : Springs are available in 8 pieces of 90×16 and 10 pieces of 90×13. | | | | | | | |
| LT16.301 | 16t ×3 | 9-90×16 | 1310/1360/1500mm | 421mm | 412mm | 403mm | 150mm |
| LT16.302 | 16t ×3 | | 1310/1360/1500mm | 451mm | 442mm | 433mm | 180mm |
| LT16.303 | 16t ×3 | | 1310/1360/1500mm | 471mm | 462mm | 453mm | 200mm |
| LT16.304 | 16t ×3 | | 1310/1360/1500mm | 501mm | 492mm | 483mm | 230mm |
| LT16.305 | 16t ×3 | | 1310/1360/1500mm | 521mm | 512mm | 503mm | 250mm |
| Notes : Springs are available in 10 pieces of 90 × 16. | | | | | | | |

- Note:**
1. Mounting height is optional.
 2. The A value marked in the figure is the mounting height value for unloading status.
 3. Copper bush and composite bush are optional as equalizer bush.
 4. Rights of changing product design and specification are reserved.

The Customized Solution Provider for Running Gear Systems

YONGLITAI AXLE CO.,LTD.

🏠 Add.1: F1, F2, No.1, Zone E, Yonglitai Industrial Park,
Sanshui, Foshan, Guangdong, China
Add.2: Mohe Community, Economic Development Zone,
Gucheng, Xiangyang, Hubei, China

☎ Tel: +86-757-88311381(Oversea)
+86-757-88311360(Foshan)
+86-0710-7402969(Hubei)

📠 Fax: +86-757-88311322

✉ E-mail: sales@ltdcmc.com

🌐 Website: www.ltdcmc.com